



Partner Connect Newsletter

April 2020

**"New RiskSense
outside-in capabilities
extend inside-out risk
scoring and
prioritization"**



Hello,

Hope everyone is well!

We can't ignore the fact that every person and business has been impacted by our current situation. Bad actors are taking advantage of the large changes organizations have implemented to accommodate work from home. Business leaders are focused on the adjustments they need to make with a new focus on cost efficiency. The value of RiskSense solutions and services has only increased as we move to a world where companies have mostly a remote workforce.

We recently announced our ability to provide [Full Spectrum Risk-Based Vulnerability Management](#) extending cyber risk vulnerability control from an internal perspective to now incorporate an external perspective with SRS ([Security Rating Service](#)). Our customers gain the knowledge and visibility to know what assets are now internet-facing (inadvertent and purposeful) along with an understanding of how an attacker might view them as a target based on evaluating six separate security components. They can quickly know which actions to take to close and remediate their exposure points.

We also published a new [RiskSense Spotlight Report: Cracks in the Foundation of Web and Application Frameworks](#).

We contend that having a fully-informed view of cyber risk with automated remediation prioritization providing the steps to protect business will grow in need. Organizations will appreciate full spectrum risk-based vulnerability management even more as they look at their security efficiency and staffing costs in the near future.

The RiskSense Team

RiskSense in the News

How We Enabled Ransomware to Become a Multibillion-Dollar Industry

As an industry, we must move beyond one-dimensional approaches to assessing ransomware exposures. Asking these four questions will help.

[Read Full Article](#)

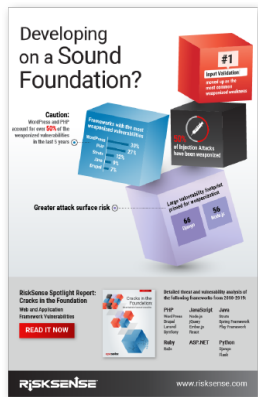
RiskSense Updates



RiskSense Security Rating Service

Ask us about RiskSense SRS. Organizations can now see how an attacker views their organization. This new functionality computes observable data across Network Security, DNS Security, Application Security, Email Security, Patch Cadence, and Domain Reputation then leverages the RiskSense platform threat intelligence analytics to calculate risk and prioritize remediation activities.

[Learn More](#)



RiskSense Spotlight Report: Cracks in the Foundation for Web and Application Frameworks

An organization's software stacks and web-facing applications are some of their most fundamentally important assets. It's also enabling their ability to pivot or adjust to these uncertain times. Technologists, DevOps, Security Analysts would be interested in the report itself. We also have an infographic (click on the image) you can share to open the conversation about application security and vulnerability management.

[Download the Research Report](#)

SYNOPSYS®
BLACK DUCK

edgescan

aqua

Integrations — Expanding Capabilities to View Cyber Risk with RiskSense RBVM

The bigger the organization or government entity becomes the more complex IT and application development becomes. Our continued focus is enabling data-driven prioritized and prescriptive remediation actions. The latest integrations are focused on expanding these capabilities across a wider variety of scanning data and technologies.

[See Our Integrations Page](#)

RiskSense [Partner Deal Registration](#) web page.
Find more information and resources at www.risksense.com.

RiskSense, Inc., 1230 Midas Way, Suite 220, Sunnyvale, CA 94085, USA

[Unsubscribe](#) [Manage preferences](#)